

MyPlymouth

Plymouth State University's portal "MyPlymouth" currently serves students, faculty, staff, and alumni. The portal software is SunGuard/SCT's Campus Pipeline Luminis Platform III, a commercial product based on the open-source JASIG uPortal project.

Integrated Services

The portal offers an infrastructure to support a growing number of web-based applications. Email and other communications services are central to the portal's role, but students can also register for classes, view their grades, and enjoy single sign-on access to WebCT. Employees can manage their records and benefits while faculty can submit grades and view student records for advising. Alumni get to keep their email addresses, while the Alumni Affairs office gets to keep close contact with them. The portal's single sign-on features are being leveraged to support a growing number of administrative applications, like facilities management and workflow management.

And the Library Fits In...

Lamson library's involvement with the portal began during the planning stages. Our "tab," that prime real estate at the top of the screen, is a result of our early involvement. We use the portal's authentication architecture to support single sign-on access to a number of library services, including the WAM proxy server, the MyMillennium patron self service module, and others.

How?

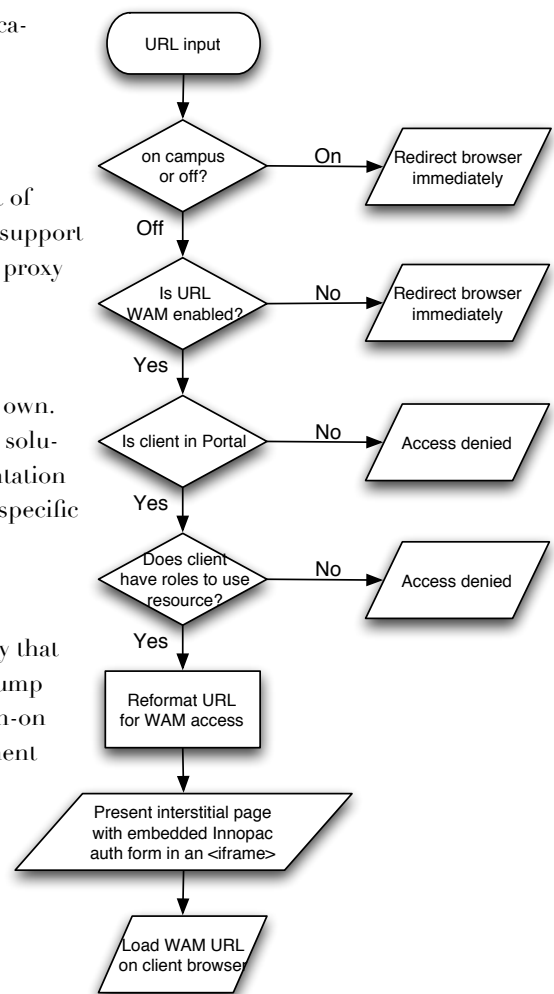
Innovative does not support any single sign-on solutions, so we built our own. Using some clever JavaScript and a bit of server-side scripting, we built a solution that sends the login information on behalf of the patron. Our presentation emphasizes the role of "identity management" in this process, and offers specific details of how our solution works.

Does It Work?

Our patrons expect integrated services, especially information services. By that measure we're just meeting expectations, but our statistics show a huge jump in usage of all online library resources shortly after integrating single sign-on access to databases via WAM. Our solution required significant development effort and is not without risk, but it's justified by our patron's success.

Contact

- < www.plymouth.edu/library/?portal >
- Elaine S. Allard, Systems Librarian
< eallard *around* plymouth *nospam*.dot* edu >
- Casey Bisson, Library Systems
< cbisson * around* plymouth *nospam*.dot* edu >



Redirect script logic diagram

This script does most of the single sign-on work to integrate III's WAM proxy in our portal